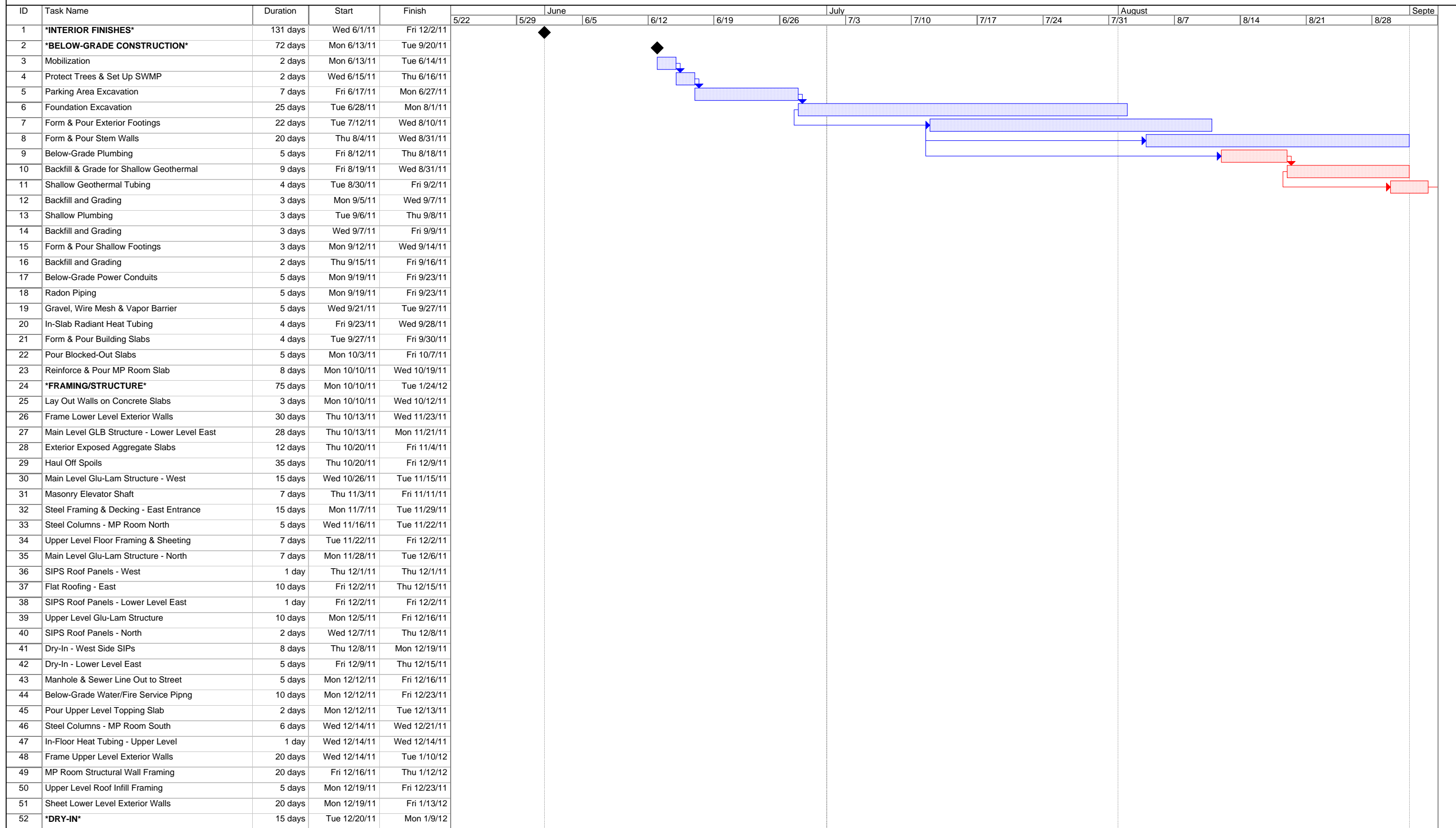


CRESTONE CHARTER SCHOOL



Task		Milestone		Rolled Up Critical Task		Split	
Critical Task		Summary		Rolled Up Milestone		External Tasks	
Progress		Rolled Up Task		Rolled Up Progress		Project Summary	
						Group By Summary	
						Deadline	

CRESTONE CHARTER SCHOOL

ID	Task Name	Duration	Start	Finish	June				July				August				Septe	
					5/22	5/29	6/5	6/12	6/19	6/26	7/3	7/10	7/17	7/24	7/31	8/7	8/14	8/21
53	SIPS Roof Panels - Upper Level East	5 days	Mon 12/26/11	Fri 12/30/11														
54	Power & Phone to Building	10 days	Mon 12/26/11	Fri 1/6/12														
55	Below Grade Power & Phone to Building	10 days	Mon 1/2/12	Fri 1/13/12														
56	MP Room Trusses	1 day	Mon 1/2/12	Mon 1/2/12														
57	SIPS Roof Panels - MP Room	1 day	Mon 1/2/12	Mon 1/2/12														
58	Dry-In - North Side SIPs	3 days	Tue 1/3/12	Thu 1/5/12														
59	<b>Building Topped Out</b>	1 day	Tue 1/3/12	Tue 1/3/12														
60	Propane Tank & Piping to Building	10 days	Mon 1/9/12	Fri 1/20/12														
61	Sheet Upper Level Exterior Walls	5 days	Wed 1/11/12	Tue 1/17/12														
62	PV Panel Array	20 days	Mon 1/16/12	Fri 2/10/12														
63	Below-Grade Propane Tank & Piping	5 days	Mon 1/16/12	Fri 1/20/12														
64	Rough Site Grading	5 days	Mon 1/16/12	Fri 1/20/12														
65	Compl. Interior Wall Framing - East	10 days	Wed 1/18/12	Tue 1/31/12														
66	Boulder Retaining Walls	10 days	Mon 1/23/12	Fri 2/3/12														
67	Nailbase Lower Level Exterior Walls	15 days	Wed 1/25/12	Tue 2/14/12														
68	Compl. Interior Wall Framing - West & North	10 days	Wed 2/1/12	Tue 2/14/12														
69	Interior Wall Framing - Upper Level	5 days	Wed 2/1/12	Tue 2/7/12														
70	Plumbing Rough-In - East	20 days	Wed 2/1/12	Tue 2/28/12														
71	HVAC Rough-In - East	20 days	Wed 2/1/12	Tue 2/28/12														
72	Heating System Piping - East	20 days	Wed 2/1/12	Tue 2/28/12														
73	Electrical Rough-In - West & North	20 days	Wed 2/1/12	Tue 2/28/12														
74	DDC Controls Rough-In - East	20 days	Wed 2/1/12	Tue 2/28/12														
75	Low Voltage Rough-In - East	20 days	Wed 2/1/12	Tue 2/28/12														
76	Electrical Rough-In - East	20 days	Wed 2/1/12	Tue 2/28/12														
77	Heating System - Mechanical Room	30 days	Wed 2/1/12	Tue 3/13/12														
78	Fire Sprinkler Piping - Mechanical Room	10 days	Wed 2/1/12	Tue 2/14/12														
79	PVC Flat Roofing	10 days	Mon 2/6/12	Fri 2/17/12														
80	Solar Thermal Vault & Piping to Building	15 days	Mon 2/6/12	Fri 2/24/12														
81	Final Grading - Site	10 days	Mon 2/6/12	Fri 2/17/12														
82	Log Porches & Shed Roofs	15 days	Wed 2/8/12	Tue 2/28/12														
83	Metal Roofing & Flashing	10 days	Mon 2/13/12	Fri 2/24/12														
84	PV Panel Wiring to Building	5 days	Mon 2/13/12	Fri 2/17/12														
85	Fire Sprinkler Piping - East	10 days	Wed 2/15/12	Tue 2/28/12														
86	Nailbase Upper Level Exterior Walls	5 days	Wed 2/15/12	Tue 2/21/12														
87	Manufactured Windows & Doors	20 days	Mon 2/27/12	Fri 3/23/12														
88	Solar Thermal Array	15 days	Mon 2/27/12	Fri 3/16/12														
89	Plumbing Rough-In - West & North	20 days	Wed 2/29/12	Tue 3/27/12														
90	HVAC Rough-In - West & North	20 days	Wed 2/29/12	Tue 3/27/12														
91	DDC Controls Rough-In - West & North	20 days	Wed 2/29/12	Tue 3/27/12														
92	Heating System Piping - West & North	10 days	Wed 2/29/12	Tue 3/13/12														
93	Fire Sprinkler Piping - West & North	20 days	Wed 2/29/12	Tue 3/27/12														
94	Low Voltage Rough-In - West & North	20 days	Wed 2/29/12	Tue 3/27/12														
95	Solar Thermal System - Mechanical Room	20 days	Wed 2/29/12	Tue 3/27/12														
96	Wall Insulation - East	5 days	Wed 2/29/12	Tue 3/6/12														
97	Exterior Siding, Fascia & Trim	20 days	Wed 2/29/12	Tue 3/27/12														
98	Wall & Roof Insulation - West & North	5 days	Wed 2/29/12	Tue 3/6/12														
99	Electrical Work - Mechanical Room	15 days	Wed 2/29/12	Tue 3/20/12														
100	Wall Insulation - MP Room	2 days	Wed 3/7/12	Thu 3/8/12														
101	Drywall - Lower Level East	20 days	Wed 3/7/12	Tue 4/3/12														
102	Drywall - West & North	20 days	Wed 3/7/12	Tue 4/3/12														
103	Elevator Install	5 days	Mon 3/12/12	Fri 3/16/12														
104	DDC Controls Wiring - Mechanical Room	15 days	Wed 3/14/12	Tue 4/3/12														



Task Milestone Rolled Up Critical Task Split Group By Summary

Critical Task Summary Rolled Up Milestone External Tasks Deadline

Progress Rolled Up Task Rolled Up Progress Project Summary

CRESTONE CHARTER SCHOOL

ID	Task Name	Duration	Start	Finish	June		July			August				Septe				
					5/22	5/29	6/5	6/12	6/19	6/26	7/3	7/10	7/17	7/24	7/31	8/7	8/14	8/21
105	Elevator Start-Up & Testing	5 days	Wed 3/21/12	Tue 3/27/12														
106	Solar Thermal Start & Test	5 days	Wed 3/21/12	Tue 3/27/12														
107	Polycarbonate Glazing	15 days	Mon 3/26/12	Fri 4/13/12														
108	Kalwall Glazing	5 days	Mon 3/26/12	Fri 3/30/12														
109	Gutters & Downspouts	5 days	Wed 3/28/12	Tue 4/3/12														
110	Sidewalk, Curb & Gutter at Driveway	15 days	Mon 4/2/12	Fri 4/20/12														
111	Drywall - Upper Level East	15 days	Wed 4/4/12	Tue 4/24/12														
112	Prime & Paint - Lower Level East	10 days	Wed 4/4/12	Tue 4/17/12														
113	Prime & Paint - West & North	20 days	Wed 4/4/12	Tue 5/1/12														
114	Window Sills - West & North	5 days	Wed 4/4/12	Tue 4/10/12														
115	Stucco	20 days	Mon 4/16/12	Fri 5/11/12														
116	Window Sills - Lower Level East	5 days	Wed 4/18/12	Tue 4/24/12														
117	Tectum Panels - Lower Level East	2 days	Wed 4/18/12	Thu 4/19/12														
118	Install Ceramic Tile in Restrooms	10 days	Wed 4/18/12	Tue 5/1/12														
119	Lighting Fixtures & Trim - Lower Level East	10 days	Wed 4/18/12	Tue 5/1/12														
120	HVAC Trim - Lower Level East	10 days	Wed 4/18/12	Tue 5/1/12														
121	Exterior Concrete Walkways	25 days	Mon 4/23/12	Fri 5/25/12														
122	Grade & Gravel Driveway	5 days	Mon 4/23/12	Fri 4/27/12														
123	Prime & Paint - Upper Level East	10 days	Wed 4/25/12	Tue 5/8/12														
124	Plumbing Fixtures & Trim - Lower Level East	5 days	Wed 5/2/12	Tue 5/8/12														
125	Tectum Panels - West & North	15 days	Wed 5/2/12	Tue 5/22/12														
126	Lighting Fixtures & Trim - West & North	10 days	Wed 5/2/12	Tue 5/15/12														
127	HVAC Trim - West & North	5 days	Wed 5/2/12	Tue 5/8/12														
128	Carpet - West & North	5 days	Wed 5/2/12	Tue 5/8/12														
129	Window Sills - Upper Level East	5 days	Wed 5/9/12	Tue 5/15/12														
130	Tectum Panels - Upper Level East	2 days	Wed 5/9/12	Thu 5/10/12														
131	Lighting Fixtures & Trim - Upper Level East	5 days	Wed 5/9/12	Tue 5/15/12														
132	HVAC Trim - Upper Level East	5 days	Wed 5/9/12	Tue 5/15/12														
133	Install Sheet Vinyl Floors	5 days	Wed 5/9/12	Tue 5/15/12														
134	Seal Concrete Floors	2 days	Wed 5/9/12	Thu 5/10/12														
135	Doors & Hardware - West & North	10 days	Wed 5/9/12	Tue 5/22/12														
136	Casework - West & North	20 days	Wed 5/9/12	Tue 6/5/12														
137	Carpet - Upper Level East	2 days	Wed 5/9/12	Thu 5/10/12														
138	Doors & Hardware- Upper Level East	5 days	Fri 5/11/12	Thu 5/17/12														
139	Casework - Upper Level East	10 days	Fri 5/11/12	Thu 5/24/12														
140	Carpet - Lower Level East	5 days	Fri 5/11/12	Thu 5/17/12														
141	HVAC Start & Test	15 days	Wed 5/16/12	Tue 6/5/12														
142	Install Toilet Partitions & Specialties	6 days	Wed 5/16/12	Wed 5/23/12														
143	Plumbing Fixtures & Trim - West & North	10 days	Wed 5/16/12	Tue 5/29/12														
144	Plumbing Fixtures & Trim - Upper Level East	10 days	Wed 5/16/12	Tue 5/29/12														
145	Doors & Hardware - Lower Level East	5 days	Fri 5/18/12	Thu 5/24/12														
146	Casework - Lower Level East	14 days	Fri 5/18/12	Wed 6/6/12														
147	DDC System Point-To-Point Testing	5 days	Wed 5/23/12	Tue 5/29/12														
148	<b>Commissioning</b>	20 days	Wed 5/23/12	Tue 6/19/12														
149	HVAC Air & Water Test & Balance	10 days	Wed 6/6/12	Tue 6/19/12														
150	<b>Substantial Completion</b>	1 day	Thu 6/7/12	Thu 6/7/12														
151	Punchlist Walkthrough	2 days	Fri 6/8/12	Mon 6/11/12														
152	Final Cleaning	7 days	Tue 6/12/12	Wed 6/20/12														
153	Complete Punchlist	12 days	Tue 6/12/12	Wed 6/27/12														
154	<b>Final Completion</b>	1 day	Thu 6/28/12	Thu 6/28/12														

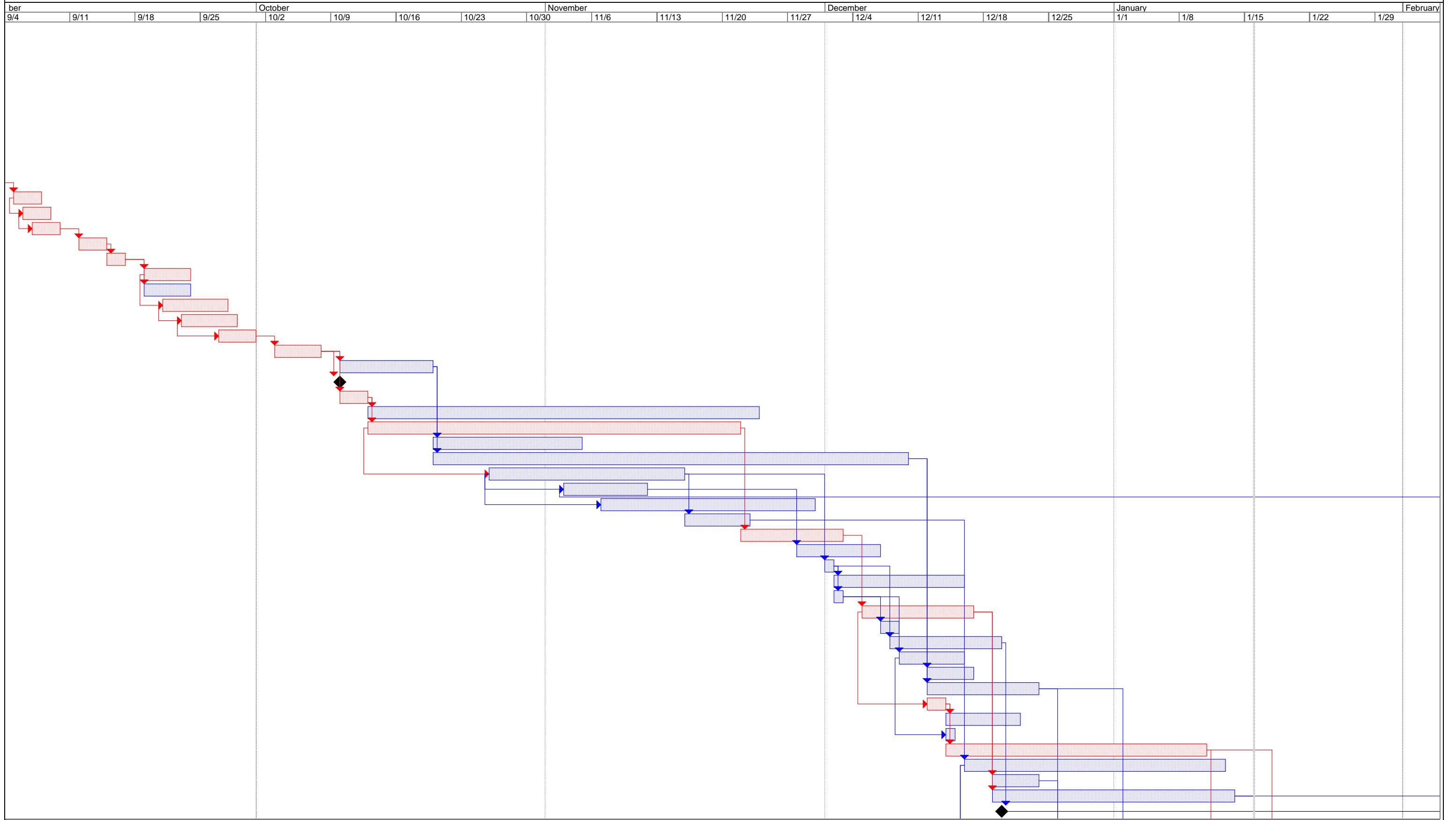


Task Milestone Rolled Up Critical Task Split Group By Summary

Critical Task Summary Rolled Up Milestone External Tasks Deadline

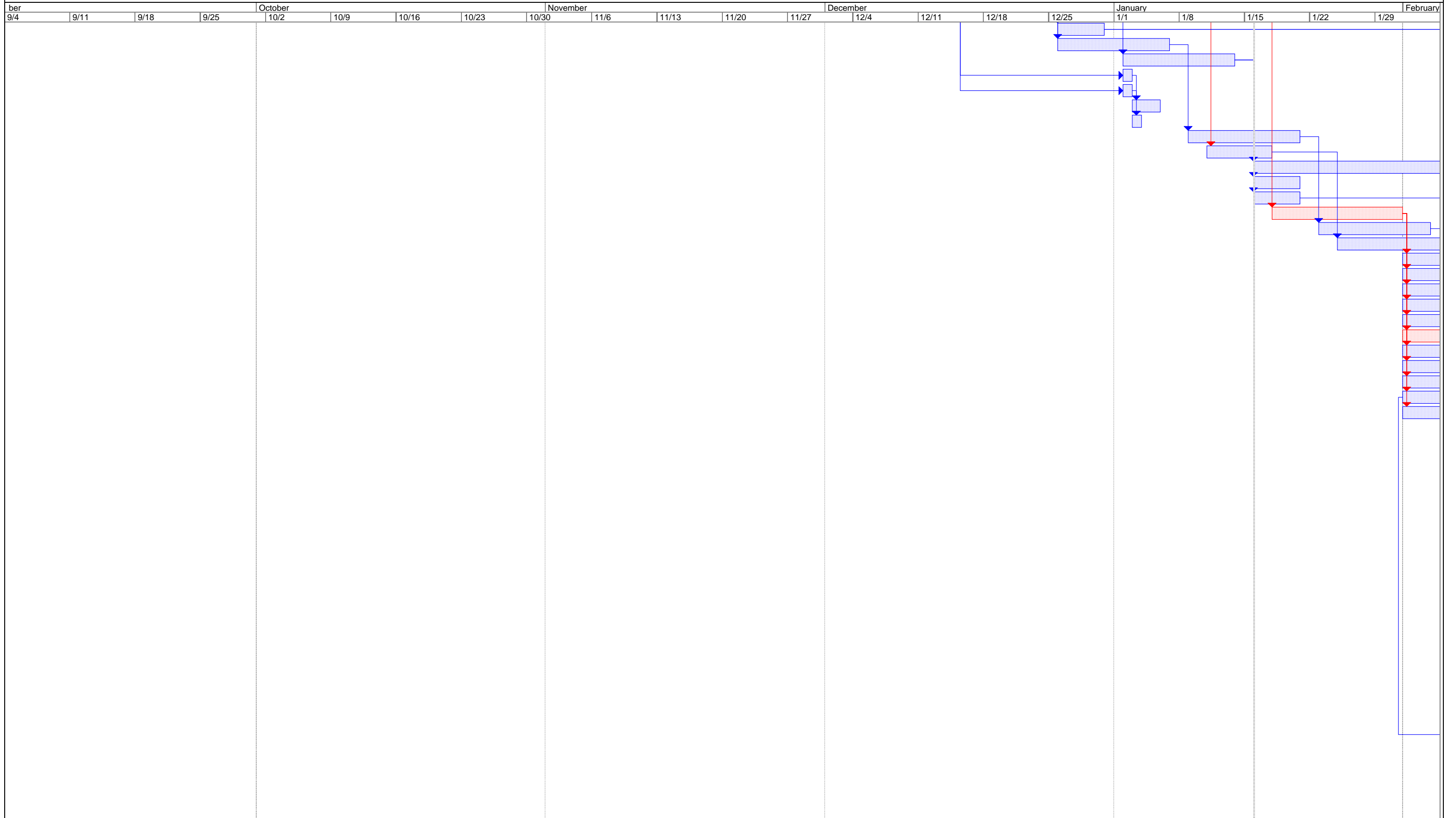
Progress Rolled Up Task Rolled Up Progress Project Summary

CRESTONE CHARTER SCHOOL



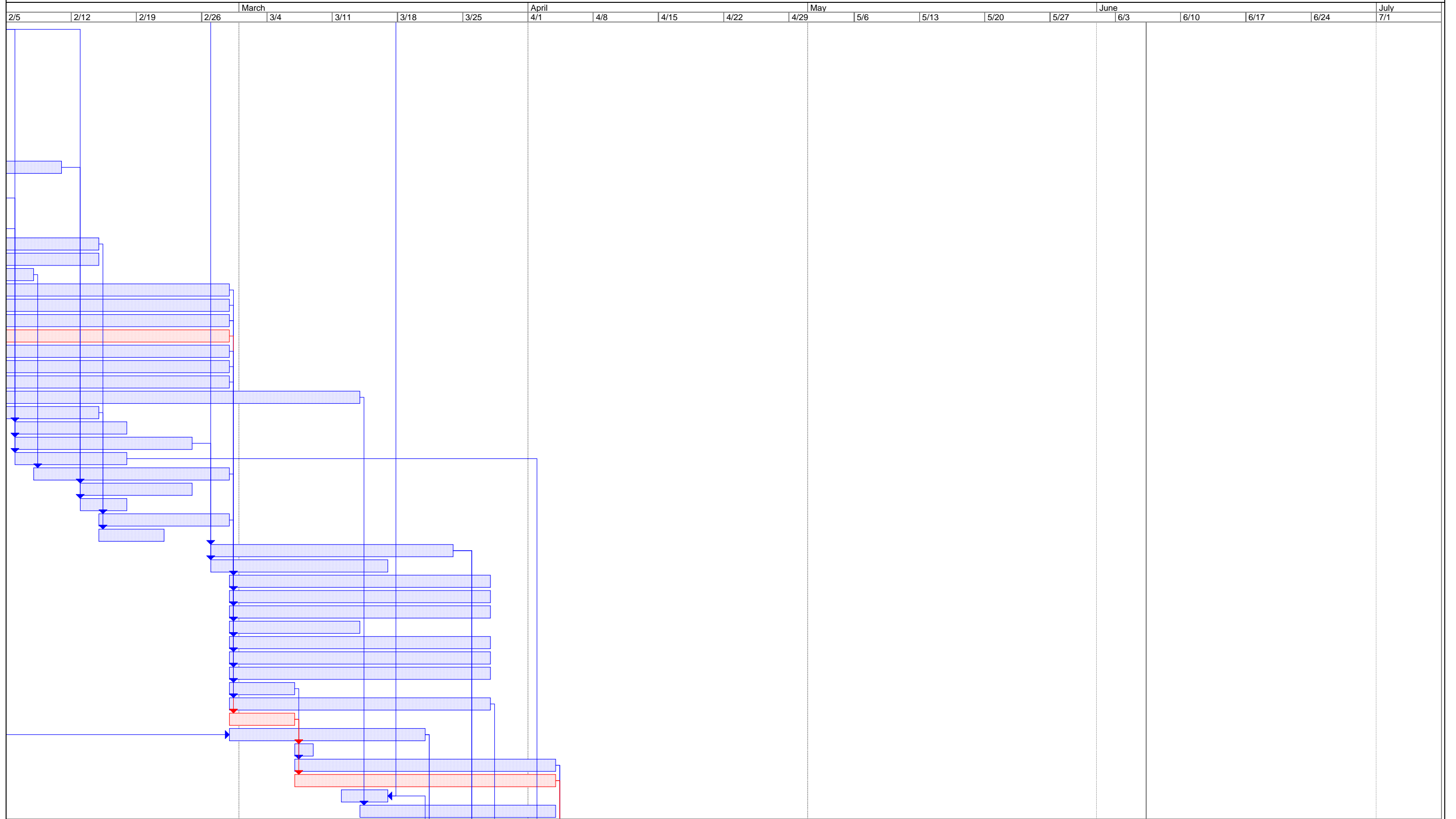
Task		Milestone		Rolled Up Critical Task		Split		Group By Summary	
Critical Task		Summary		Rolled Up Milestone		External Tasks		Deadline	
Progress		Rolled Up Task		Rolled Up Progress		Project Summary			

CRESTONE CHARTER SCHOOL



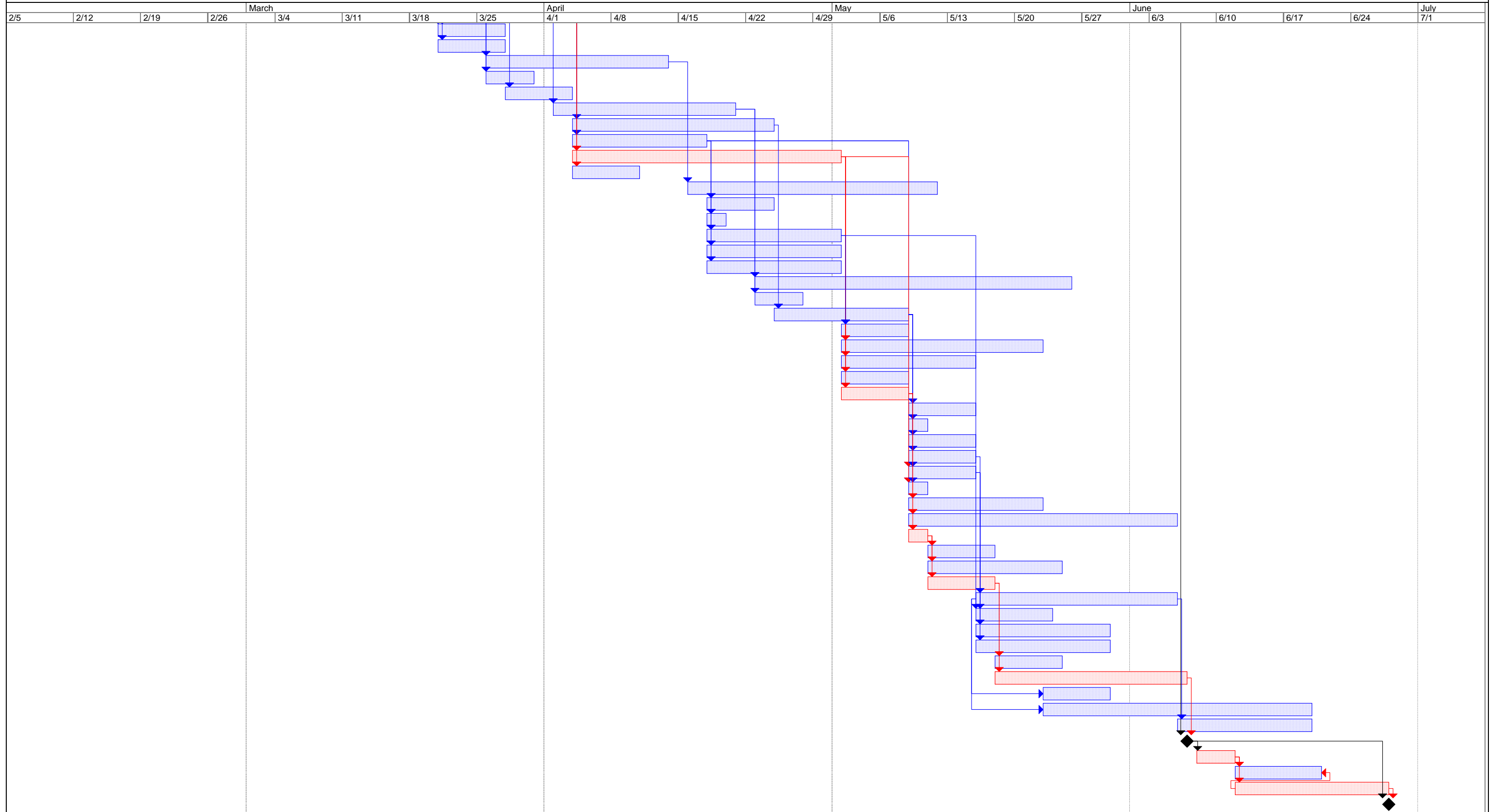
Task		Milestone		Rolled Up Critical Task		Split		Group By Summary	
Critical Task		Summary		Rolled Up Milestone		External Tasks		Deadline	
Progress		Rolled Up Task		Rolled Up Progress		Project Summary			

CRESTONE CHARTER SCHOOL



Task		Milestone		Rolled Up Critical Task		Split		Group By Summary	
Critical Task		Summary		Rolled Up Milestone		External Tasks		Deadline	
Progress		Rolled Up Task		Rolled Up Progress		Project Summary			

CRESTONE CHARTER SCHOOL



Task		Milestone		Rolled Up Critical Task		Split		Group By Summary	
Critical Task		Summary		Rolled Up Milestone		External Tasks		Deadline	
Progress		Rolled Up Task		Rolled Up Progress		Project Summary			